

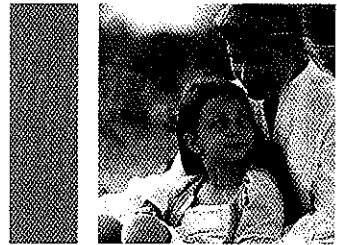


Available PROMIS Measures for Adults

- PROMIS profile forms (29-, 43-, or 57-item versions)
- Global health
- Physical function
- Fatigue
- Pain (intensity, behavior, interference)
- Sleep (sleep disturbance, sleep-related impairment)
- Depression
- Anxiety
- Anger
- Satisfaction with social participation
- Sexual function
- Psychosocial illness impact [positive, negative]
- Applied cognition [concerns, abilities]

PROMIS Measures in Development for Adults

- Alcohol use
- Physical function for samples with mobility aids users
- Social function (ability and satisfaction)
- Social support
- Gastrointestinal distress
- Self-efficacy for self-management of chronic illness



Available on NIHpromis.org

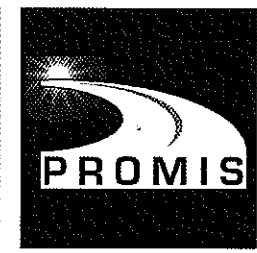
- PROMIS measures
- PROMIS Assessment Center
- PROMIS CAT Demo
- PROMIS Assessment Center workshops info
- Extensive documentation of PROMIS qualitative and quantitative evaluations
- Information about the PROMIS network
- PROMIS publications and presentations

PROMIS Web Site:
<http://www.nihpromis.org>

PROMIS Contact Info:
info@nihpromis.org

or 1-888-261-0922

PROMIS Assessment Center:
<http://www.assessmentcenter.net>



PROMIS[®]

Patient-Reported Outcomes Measurement Information System[®]

Dynamic tools to measure health outcomes from the patient perspective

Available PROMIS Measures for Children

- Physical function (mobility, upper extremity)
- Pain (interference)
- Fatigue
- Asthma-specific symptoms
- Depression
- Anxiety
- Anger
- Peer relationships

PROMIS Measures in Development for Children

- Physical activity
- Experiences of stress
- Family belonging
- Subjective well-being
- Pain (behavior, severity)





What is the goal of PROMIS?

The goal of the **Patient-Reported Outcomes Measurement Information System (PROMIS)**, funded by the **National Institutes of Health (NIH)**, is to provide clinicians and researchers access to efficient, precise, valid, and responsive adult- and child-reported measures of health status, including symptoms and health-related quality of life. Each item and questionnaire has been rigorously evaluated and refined based on studies involving both patients with a broad array of diseases (e.g., cancer, arthritis, heart disease, pulmonary, neurologic, psychiatric) as well as people without disease. Therefore, these dynamic tools can be used across a wide variety of chronic diseases and conditions and in the general population.

What types of studies could use PROMIS?

- Clinical, Observational, or Comparative Effectiveness Research
 - Primary, secondary, or exploratory endpoints
 - Efficacy/effectiveness of an intervention
- Population Surveillance
 - Measures of disease burden or the health of populations
- Health Care Delivery
 - Health status measures to inform physician-patient communications

How do I access PROMIS?

The PROMIS Assessment Center is an online (<http://www.assessmentcenter.net>) research management tool that enables researchers to create study-specific Web sites that securely capture patient data. Studies can include measures from the Assessment Center library, as well as custom instruments created or entered by the researcher. Any PROMIS measure can be downloaded for administration on paper or be included in an online study. The Assessment Center's many features include customization of items or instruments, such as format, randomization, and skip patterns; scoring of short forms and computerized-adaptive tests (CATs); storage of protected health information in a separate, secure database; automated accrual reports; data export; graphs of scores; and the ability to capture endorsement of online consent forms.

What are PROMIS item banks?

Each PROMIS item bank includes a large collection of items—including questions and their response options—that have been evaluated and tested in select populations to ensure their relevance, clarity, and psychometric robustness for measuring symptoms or health-related quality of life. PROMIS item banks enable researchers to select or design their own PROMIS short form measure or to administer the questionnaire using CAT.

What is PROMIS Computerized Adaptive Testing (CAT)?

The PROMIS CAT tailors the computerized questionnaire to the individual by selecting the most informative set of questions based on their responses to previously administered questions in the domain. The CAT provides a precise measure of a patient's health status with the fewest number of questions. The PROMIS CAT is available through the PROMIS Assessment Center. The PROMIS CAT Demo is available at <http://www.NIHpromis.org>.

What are PROMIS short forms and profiles?

Each PROMIS short form comprises a set of items that have been carefully selected from the item banks to enhance estimation of a patient's health status. Short forms are available for each domain; the short forms vary in length from 4 to 8 items to accommodate the needs of individual studies. The 29-, 43-, and 57-item versions of the PROMIS profile forms include 7 key PROMIS domains and vary in length depending on a study's need to balance precision and response burden.

Researchers also may design their own short forms by selecting items from the item banks. All short forms within the same health domain are calibrated on the same metric, which allows results to be compared or combined across different measures.

Patient-Reported Outcomes Measurement Information System®, PROMIS®, and the PROMIS & Design Logos are registered trademarks of the U.S. Department of Health and Human Services (HHS).